

Product data sheet

Perlan 140 glass fixed panel with 45 mm glass clamping plate



Sliding door fitting system for glass doors with a leaf weight of 140 kg and fixed panel and a 45 mm glass clamping plate attached to the ceiling

AREAS OF APPLICATION

- Frequently used interior sliding doors
- Living, office, and conference areas as well as hotels
- Installation of fittings in all visible areas
- Single and double leaf glass sliding doors with glass fixed panel
- Installation to the ceiling

Perlan 140 glass fixed panel with 45 mm glass clamping plate



PRODUCT FEATURES

- Sliding door fitting for leaf weights of up to 140 kg
- For glass leaves with 45 mm clamping plate and a lateral fixed panel
- With damping on one or both sides for doors with up to 80 kg leaf weight, so that the door is quietly slowed down and moved into the end position
- Small floor and side profiles create a generous clearance gauge for fixed panels and glass sliding doors
- Fixed glass panels can be installed quickly and easily with rubber seals

TECHNICAL DATA

Productname Perlan 140 glass fixed panel with 45 mm glass clamping plate

PART

FLOOR GUIDE FOR GLASS LEAF

Floor guide with variable adjustment for glass thicknesses 8, 10 and 12 mm



| Designation | Description | Ident-No. | Colour | Glass thickness |
|---|--|-----------|-----------------|-----------------|
| Floor guide for glass leaf (adjustable) | with variable adjustment for glass thickness 8-13.5 mm, with frieze band for noise reduction with structured glass surfaces, without attachment material | 120417 | silver-coloured | 8 - 13.5 mm |

ACCESSORIES

END STOP WITH ADJUSTABLE HOLD-OPEN SPRING

Adjustable end stop for Perlan sliding door fitting



| Designation | Ident-No. |
|---|-----------|
| End stop with adjustable hold-open spring | 069274 |

Perlan 140 glass fixed panel with 45 mm glass clamping plate



HOLD-OPEN SPRING

Hold-open spring for Perlan 140 end stop



| Designation | Ident-No. |
|------------------|-----------|
| Hold-open spring | 064242 |

DOOR STOP

End stop for sliding leaves



| Designation | Ident-No. |
|-------------|-----------|
| Door stop | 000339 |
| Door stop | 000342 |

LSG GLASS / METAL GLUE *

Glass metal glueing kit for connecting aluminium brackets with glass panes



| Designation | Description | Ident-No. |
|-------------------------------|-----------------------------|-----------|
| LSG glass / metal glue 50 g * | for up to 30 sliding panels | 133039 |

LSG GLASS / METAL GLUE *

Glass metal glueing kit for connecting aluminium brackets with glass panes



Perlan 140 glass fixed panel with 45 mm glass clamping plate



| Designation | Description | Ident-No. |
|--------------------------------|----------------------------|-----------|
| LSG glass / metal glue 5x1 g * | for up to 5 sliding panels | 133056 |

CLAMPING INSERT, GLASS CLAMPING PLATE 45 MM *

Clamping shim for glass thicknesses of 12.76 mm (1/2 inch)



| Designation | Description | Ident-No. |
|---|---|-----------|
| Clamping insert, glass clamping plate 45 mm * | for 2 glass clamping plates, for use with 12.7 mm (1/2 inch) toughened safety glass | 133022 |

HEIGHT COMPENSATION MECHANISM / CEILING DISTANCE SET, WITH VARIABLE ADJUSTMENT

Height compensation with variable adjustment for ceiling installation of tracks



| Designation | Description | Ident-No. |
|--|--|-----------|
| Height compensation mechanism / ceiling distance set, with variable adjustment | 6 pieces, height compensation mechanism with variable adjustment from 13 mm to 18 mm. For use for ceiling mounting using clip-on cover 100/145 as well as for general use on uneven ceilings | 138099 |

PERLAN DUOSYNC SET FOR GLASS LEAVES

Duosync - manual drive for glass leaves



| Designation | Description | Ident-No. | Glass thickness | Type of installation |
|-------------------------------------|--|-----------|-----------------|----------------------|
| Perlan Duosync set for glass leaves | for synchronisation of 2-leaf doors up to 140 kg per leaf, consisting of: 2 x deflection pulleys, 2 x driver glass clamping plate 45 mm, 12.5 m tooth belt, installation materials | 139207 | 8 - 12.76 mm | Wall, Ceiling |

Perlan 140 glass fixed panel with 45 mm glass clamping plate



PERLAN SOFTSTOP SET, MEDIUM VERSION, DAMPED ON ONE SIDE, UP TO 80 KG

Perlan SoftStop damping on one side for leaf weights up to 80 kg and leaf widths of 900 up to 1290 mm



| Designation | Description | Ident-No. | Leaf width (min.) | Leaf width (max.) |
|---------------------------------------|---|-----------|-------------------|-------------------|
| Perlan SoftStop set, medium, one side | The set includes: 2 x roller carriage with damping unit on one side, 2 x end stop, 1 x trigger with fixing screw, 2 x standard suspension plate | 128877 | 900 mm | 1290 mm |

PERLAN SOFTSTOP SET, LONG VERSION, DAMPED ON BOTH SIDES, UP TO 80 KG

Perlan SoftStop damping on both sides for leaf weights up to 80 kg



| Designation | Description | Ident-No. | Leaf width (min.) | Leaf width (max.) |
|---------------------------------------|--|-----------|-------------------|-------------------|
| Perlan SoftStop set, long, both sides | The set includes: 2 x roller carriage with damping unit on both sides, 2 x end stop, 2 x trigger with fixing screws, 2 x standard suspension plate | 128891 | 1290 mm | 1700 mm |

SET PERLAN SOFTSTOPDUO, DAMPED ON BOTH SIDES

Perlan SoftStopDuo with damping on both sides up to 80 kg leaf weight



| Designation | Description | Ident-No. | Leaf width (min.) | Leaf width (max.) |
|---|--|-----------|-------------------|-------------------|
| Perlan SoftStopDuo set, damped on both sides, up to 80 kg | The set includes: 2 x roller carriage with damping unit on both sides, 2 x end stop, 2 x trigger with fixing screws, 2 x standard suspension plate | 150071 | 750 mm | 1290 mm |

Perlan 140 glass fixed panel with 45 mm glass clamping plate



LSG GLUEING BRACKET SET *

Aluminium glueing bracket for LSG and glass clamping plate 45



| Designation | Description | Ident-No. |
|---------------------------|---|-----------|
| LSG glueing bracket set * | for use with LSG in connection with glass clamping plate 45 mm, for 2 clamping plates, without adhesive | 133099 |

DOOR PULL HANDLE, CONFIGURED *

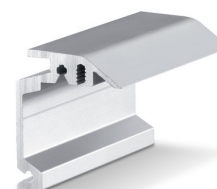
Push bar – round design for installation on glass leaves



| Designation | Ident-No. | Colour |
|--------------------------------|-----------|-----------------|
| Door pull handle, configured * | 127616 | Stainless steel |

WALL BRACKET CONCEALED PERLAN

Wall bracket for concealed wall installation of tracks



| Designation | Description | Ident-No. | Colour |
|-------------------------------|--|-----------|-----------------------|
| Wall bracket concealed Perlan | bespoke, for use with up to 37 mm leaf thickness | 130468 | Stainless steel optic |
| Wall bracket concealed Perlan | bespoke, for use with up to 37 mm leaf thickness | 130462 | EV1 |

Perlan 140 glass fixed panel with 45 mm glass clamping plate



GLASS SEAL FOR PERLAN / LEVOLAN FIXED PANEL

Glass seal for fixed panel profile



| Designation | Description | Ident-No. | Colour |
|---|------------------------------------|-----------|--------|
| Glass seal for Perlan / Levolan fixed panel | for 8 / 10 / 12 mm glass thickness | 126869 | grey |
| Glass seal for Perlan / Levolan fixed panel | for 8 / 10 / 12 mm glass thickness | 158650 | black |

PERLAN SOFTSTOP SET, SHORT VERSION, DAMPED ON ONE SIDE, UP TO 80 KG

Perlan SoftStop damping on one side for leaf weights up to 80 kg and leaf widths of 575 to 900 mm



| Designation | Description | Ident-No. | Leaf width (min.) | Leaf width (max.) |
|--------------------------------------|---|-----------|-------------------|-------------------|
| Perlan SoftStop set, short, one side | The set includes: 2 x roller carriage with damping unit on one side, 2 x end stop, 1 x trigger with fixing screw, 2 x standard suspension plate | 128876 | 575 mm | 900 mm |

FLOOR GUIDE SET GLASS GUIDE

Floor guide for glass sliding leaves for glass thickness 8, 10 and 12 mm



| Designation | Description | Ident-No. | Colour | Glass thickness |
|--|------------------------|-----------|-----------------|-----------------|
| Floor guide for glass leaf (stainless steel) | For 8, 10, 12 mm glass | 134990 | Stainless steel | 8 - 12 mm |

Perlan 140 glass fixed panel with 45 mm glass clamping plate



COMPLETE CLIP-ON COVER SET 100

Clip-on cover for covering Perlan door fitting systems



| Designation | Description | Ident-No. | Type of installation |
|--------------------------------|--|-----------|----------------------|
| Complete clip-on cover set 100 | for wall and ceiling mounting, continuous cover, bespoke configuration | 138098 | Wall, Ceiling |

* The products designated above may vary in form, type, characteristics, function, or availability depending on the country. Please get in touch with your GEZE contact person if you have any questions.