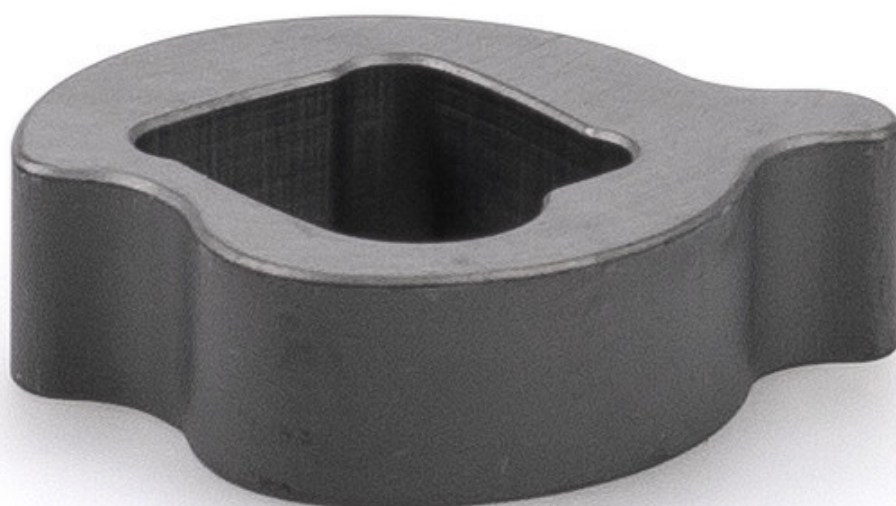


Product data sheet
Spindle extension
Boxer EFS 4-6 *



For comfort hold-open lever

AREAS OF APPLICATION

→ To bridge the rebate space, depending on the installation situation

Spindle extension Boxer EFS 4-6 *



PRODUCT FEATURES

→ Spindle extension of 4 mm or 8 mm

TECHNICAL DATA

Productname Spindle extension Boxer EFS 4-6 *

VARIANTS / ORDER INFO

Designation	Description	Ident-No.	Spindle extension
Spindle extension Boxer EFS 4-6	For comfort hold-open lever	153574	8 mm
Spindle extension Boxer EFS 4-6 *	For comfort hold-open lever	153573	4 mm

* The products designated above may vary in form, type, characteristics, function, or availability depending on the country. Please get in touch with your GEZE contact person if you have any questions.